

Alaska Department of Fish and Game

Habitat Section
Southeast Region



East Port Frederick Uncataloged Stream

ADDITION

Water body name:

Survey date: 8/23/2022

Quad: Juneau A-5

Species & Lifestage:

Upper Reach Latitude: 58.046564 **Longitude:** -135.541404

Survey crew: FC, RR

Lower Reach Latitude: 58.047883 **Longitude:** -135.550765

Findings: We surveyed this uncataloged stream using a backpack electrofisher and GPS. We captured juvenile coho salmon, Dolly Varden, cutthroat trout, and sculpin. We also observed adult pink salmon. The stream flows through an incised channel with lots of quality spawning gravel as it crosses under a bridge and into the intertidal (Table 1; Figures 1–3).

Recommendations: Add this uncataloged stream to the anadromous waters catalog for rearing coho salmon and present pink salmon (Figure 4).

Nomination: Pending

Table 1.—Uncataloged stream survey data.

Waypoint	Latitude	Longitude	Notes	Stream Width ft	Stream Substrate	Habitat Features	Gradient %	Sample Effort	Sample Results
1468	58.046957	-135.547404	Start of survey of stream at tree line along intertidal. Adult pinks observed via visual ID. 2-yr+ CO capture. Advancing upstream.	20-25	Small Gravel Cobble	Cut Banks Spawning Substrate	1-2	EF	2 P 1 CO 1 SC
1469	58.046825	-135.546192	Stream crosses under steel beam and wood surface bridge. Abutments look in fair condition; some riprap eroded away from high flows.	25-30	Small Gravel Cobble	Cut Banks Spawning Substrate	2-4	EF	4 SC
1470	58.046925	-135.545730	Continued 1-yr CO capture.	20-25	Small Gravel Large Gravel	Cut Banks Spawning Substrate	2-4	EF	2 CO
1471	58.046972	-135.544818	Gradient increasing (compared to downstream). 2-3' tall log jam falls. Continued 1-yr CO capture downstream and upstream of falls.	20-25	Small Gravel Cobble	Spawning Substrate Incised Channel	4-6	EF	4 CO 2 CT 1 DV
1472	58.046745	-135.544408	3-4' tall log jam falls with braid around shorter ~1' tall falls with significant jump pool likely providing fish passage. Large pool upstream of falls with lots of good spawning substrate. Continued 1-yr CO capture upstream of falls.	20-25	Small Gravel Large Gravel	Spawning Substrate Log Jams	2-4	EF	20 CO

Table 2.–Continued.

Waypoint	Latitude	Longitude	Notes	Stream Width ft	Stream Substrate	Habitat Features	Gradient %	Sample Effort	Sample Results
1473	58.046521	-135.543099	Series of 1-2' tall falls with jump pools. Continued 1-yr CO capture upstream of falls. Channel becoming increasingly incised with lots of trees/brush crowding stream to the point of making advancing/surveying difficult.	20-25	Small Gravel Large Gravel	Incised Channel Spawning Substrate	4-6	EF	6 CO
1474	58.046518	-135.542360	Stream becoming slightly more open for walking. Continued 1-yr CO capture.					EF	2 CO
1475	58.046610	-135.541426	Continued 1-yr CO capture. Gradient increasing but still conducive to fish passage. CO habitat likely continues upstream. Amount of tree-fall in/over stream making advancing/surveying difficult. Ending survey for now; may want to find another approach to upstream habitat.	15-20	Small Gravel Cobble	Incised Channel	4-6	EF	3 CO



Figure 1.–Juvenile coho salmon captured at waypoint 1470.



Figure 2.—Bridge abutment with some riprap eroded at waypoint 1469.



Figure 3.—Channel with log jam falls at waypoint 1471.

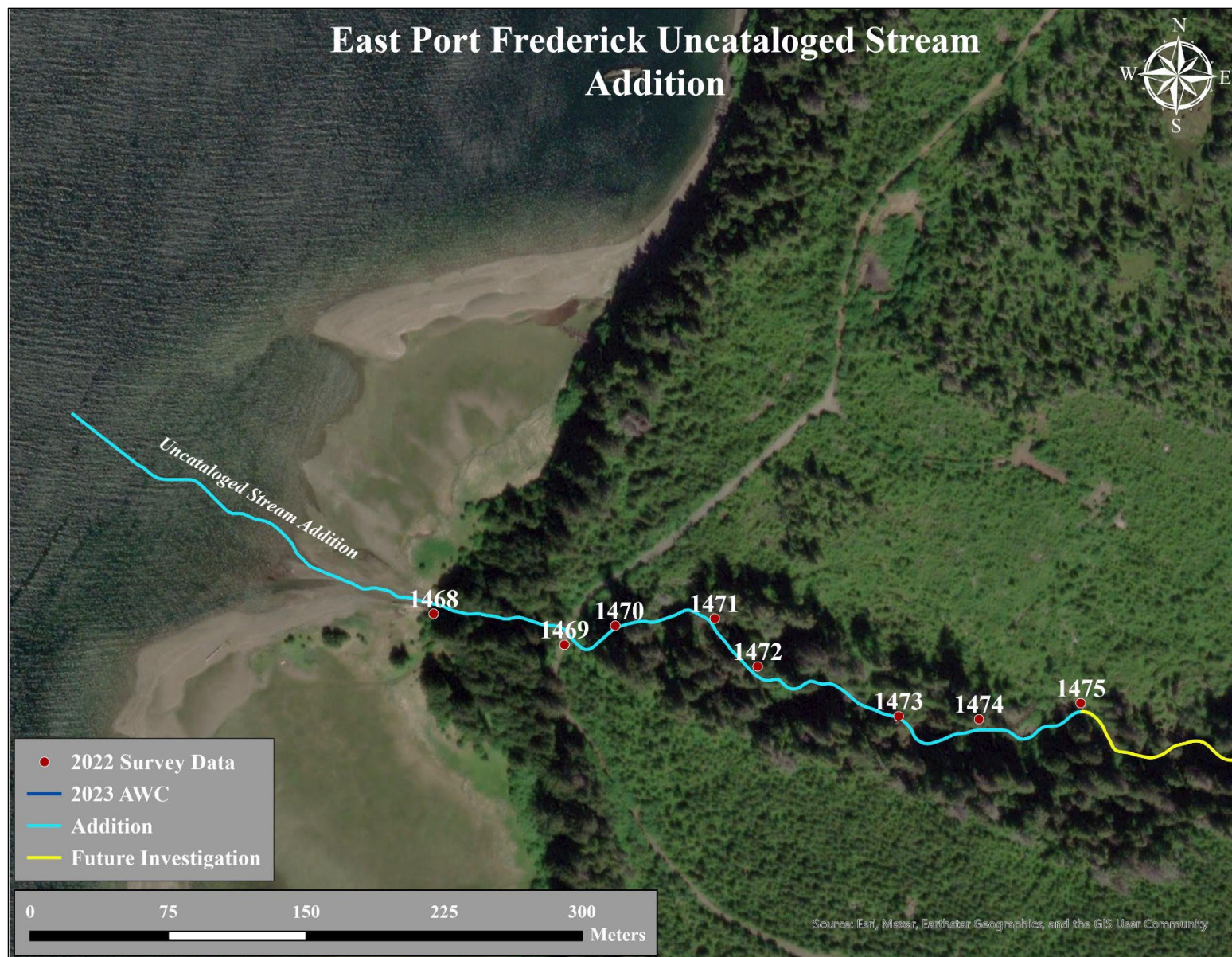


Figure 4.–Uncataloged stream addition map.